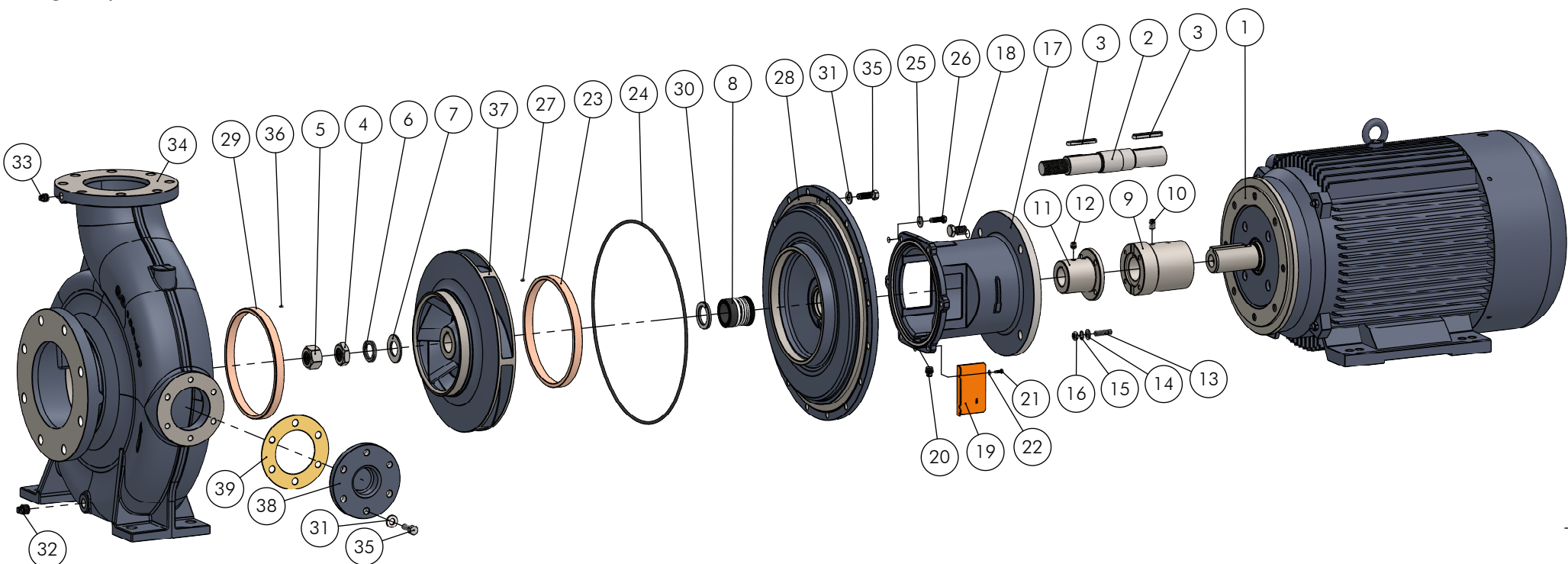


Montagem para as bombas GSD/250

SUCÇÃO: --- RECALQUE: ---



- Lista de bombas:
- GSD80-400
 - GSD100-400
 - GSD150-250
 - GSD150-315
 - GSD150-400

Pos.	Descrição	Material	Qtde
1	Motor Eixo Standard (Standard Shaft Motor)	---	1
2	Eixo (Shaft)	Inox-420	1
3	Chaveta (Key)	Inox-304	2
4	Porca Hexagonal(Fino) (Hex Jam Nut Thin)	Inox-304	1
5	Porca Hexagonal (Hex Nut Normal Type)	Inox-304	1
6	Arruela de Pressão(Spring Washer)	Inox-304	1
7	Arruela Lisa (Plane Washer)	Inox-304	1
8	Selo Mecânico (Mechanical Seal)	Ceram./Carvão/NBR/304	1
9	Bucha do Motor (Motor Bushing)	SAE-1045	1
10	Parafuso Allen (Set Screw)	Aço Liga	2
11	Bucha da Bomba (Pump Bushing)	SAE-1045	1
12	Parafuso Allen (Set Screw)	Aço Liga	2
13	Prisioneiro (Stud Bolt)	Aço Liga	4
14	Arruela Lisa (Washer)	ZB (SAE)	4
15	Arruela de Pressão (Spring Washer)	ZB (SAE)	4
16	Porca Sextavada (Hex Nut)	ZB (SAE)	4
17	Intermediário (Bracket)	ASTM A48 CL250	1
18	Parafuso Sextavado (Bolt)	ZB (SAE)	4
19	Protetor (Protector)	Aço-1020	2
20	Bujão BSP (Plug)	ZB (SAE)	1
21	Parafuso Sextavado (Bolt)	ZB (SAE)	4
22	Arruela Lisa (Washer)	ZB (SAE)	4
23	Anel de Desgaste(Casing Ring)	Bronze C84400	1
24	Anel O´Ring (O´Ring)	NBR	1

Pos.	Descrição	Material	Qtde
25	Arruela Lisa (Washer)	ZB (SAE)	6
26	Parafuso Sextavado (Bolt)	ZB (SAE)	6
27	Pino Elástico (Spring Pin)	Inox-304	1
28	Tampa de Pressão (Casing Cover)	ASTM A48 CL250	1
29	Anel de Desgaste (Casing Ring)	Bronze C84400	1
30	Anel Distanciador do Rotor (Spacer Ring)	Inox-304	1
31	Arruela Lisa (Washer)	ZB (SAE)	---
32	Bujão BSP (Plug)	ZB (SAE)	1
33	Bujão BSP (Plug)	ZB (SAE)	1
34	Carcaga (Casing Machining)	ASTM A48 CL250	1
35	Parafuso Sextavado (Bolt)	ZB (SAE)	---
36	Pino Elástico ((Spring Pin)	Inox-304	1
37	Rotor (Impeller)	ASTM A48 CL250	1
38	Tampa Carcaga (Handhole Cover)	ASTM A48 CL250	1
39	Junta P/Tampa Carcaga (Handhole Gasket)	Velumóid	1
40	Parafuso Sextavado (Bolt)	ZB (SAE)	6
41	Arruela Lisa (Washer)	ZB (SAE)	6

thebe BOMBAS HIDRÁULICAS	EXECUTADO	Guilherme Z.	20/04/21						
	VERIFICADO	Fagner C.	20/04/21						
	APROVADO	Gustavo G.	20/04/21						
EBARA CORPORATION		NOME	DATA CRIAÇÃO	OBSERVAÇÃO	REVISÃO	LOCAL	Nº DOCUM.	DATA	APROVADO

Bomba Série GSD - GSD Series Pumps 1092GS3

DESENHO Nº



ESCALA:1:13

Em caso de dúvidas pergunte! MATERIAL : PESO: FOLHA 1 de 1 UNID.: Milímetro (mm)

	Pos.	Código	Descrição	(20 - 30)cv Carc. 160	(40 - 50)cv Carc. 200	(60 - 75)cv Carc. 225
EIXO	1	----	MOTOR	1	1	1
	2	1127.04.12476	EIXO GSD-250 INOX-420 (KIT)	1	1	1
	3	1127.04.12294	CHAVETA 12x8x75R (AA) INOX 304	2	2	2
	4	1127.04.12414	PORCA SEXT.UNC 1.1/4" (FINA) INOX 304	1	1	1
	5	1127.04.12298	PORCA SEXT.UNC 1.1/4" INOX	1	1	1
	6	1127.04.12292	ARRUELA DE PRESSAO 1.1/4" INOX	1	1	1
	7	1127.04.12293	ARRUELA LISA 1.1/4" INOX 304 (GS)	1	1	1
	8	1127.04.12307	SELO MEC. 48mm CER/CARBONO/NBR/INOX 304 (GS)	1	1	1
INTERMEDIÁRIO	9	1127.04.12202	BUCHA DO MOTOR GSD Ø55	-	1	1
		1127.04.12201	BUCHA DO MOTOR GSD Ø42	1	-	-
	10	1127.04.12155	PARAF. ALLEN S/C UNC 1/2 X 7/8 RI GEOMET	-	2	2
		1127.04.12154	PARAF. ALLEN S/C UNC 3/8 X 5/8 RI GEOMET	2	-	-
	11	1127.04.12477	BUCHA DA BOMBA GSD-250 Ø96	-	1	1
		1127.04.12478	BUCHA DA BOMBA GSD-250 Ø68	1	-	-
	12	1127.04.12479	PARAF. ALLEN S/C UNC 1/2 X 1/2 RI GEOMET	-	2	2
		1127.04.12154	PARAF. ALLEN S/C UNC 3/8 X 5/8 RI GEOMET	2	-	-
	13	1127.04.11019	PRISIONEIRO GSD UNC 3/8 x 40mm	-	4	4
		1127.04.11028	PRISIONEIRO GSD UNC 1/4 x 30mm	4	-	-
	14	1127.04.10015	ARRUELA LISA M10 ZB	-	4	4
		1127.04.11087	ARRUELA LISA M6 ZB	4	-	-
	15	1127.04.00356	ARRUELA DE PRESSAO MEDIA 3/8" ZB	-	4	4
		1127.04.00355	ARRUELA DE PRESSAO MEDIA 1/4" ZB	4	-	-
	16	1127.04.00345	PORCA SEXT. UNC 3/8"	-	4	4
		1127.04.00343	PORCA SEXT. UNC 1/4" ZB	4	-	-
		1127.04.12496	INTERMEDIARIO GSD 250-225	-	-	1
	17	1127.04.12497	INTERMEDIARIO GSD 250-200	-	1	-
		1127.04.12498	INTERMEDIARIO GSD 250-160	1	-	-
	18	1127.04.00722	PARAF.SEXT.UNC 5/8 X 1.1/4 RI ZB	-	-	4
		1127.04.10253	PARAF.SEXT.UNC 1/2 x 1 RI ZB	4	4	-
	19	1127.04.12297	PROTETOR GS/250A (114X72,5) ACO 1020	-	-	2
		1127.04.12130	PROTETOR GS/240A (102X60) ACO 1020	-	2	-
		1127.04.11849	PROTETOR GS/230A (95X55) ACO 1020	2	-	-
	20	1127.04.10791	BUJAO 3/8" BSP GALV. SAE (ZB)	1	1	1
	21	1127.04.10706	PARAF.SEXT.UNC 3/16 x 5/8" RI ZB (GS)	4	4	4
	22	1127.04.10732	ARRUELA LISA No.10 (3/16) ZB (1 KG=5,70%) GS	4	4	4
TAMPA PRES.	23	1127.04.11107	ANEL DESG.BRONZE.GS/FSLY-212	1	1	1
	24	1127.04.12244	ANEL O'RING 255,19 x 3,53 NBR (GS)	1	1	1
	25	1127.04.00352	ARRUELA LISA 3/8" ZB (1 KG=2,17 %)	6	6	6
	26	1127.04.11854	PARAF.SEXT.UNC 3/8 x 1.3/16 RI ZB (GS)	6	6	6
	27	1127.04.10704	PINO ELASTICO 3 X 8 INOX 304 (GS)	2	2	2
	28	1127.04.11112	TAMPA PRES.GS150-315 SELO (KIT)	1	1	1
	29	1127.04.11107	ANEL DESG.BRONZE.GS/FSLY-212	1	1	1
	30	1127.04.11078	ANEL DISTANCIADOR DO ROTOR GS/250 MANCAL INOX 304	1	1	1
CARÇAÇA	31	1127.04.00353	ARRUELA LISA 1/2" ZB	12	12	12
	32	1127.04.10791	BUJAO 3/8" BSP GALV. SAE (ZB)	1	1	1
	33	1127.04.10791	BUJAO 3/8" BSP GALV. SAE (ZB)	1	1	1
	34	Tab.Carcaça	CARCACA GS150-250 (KIT)	1	1	1
	35	1127.04.04256	PARAF.SEXT.UNC 1/2 x 1.1/2 RI ZB	12	12	12
	36	1127.04.10704	PINO ELASTICO 3 X 8 INOX 304 (GS)	2	2	2
	XX	1127.04.12338	PLAQUETA DE IDENTIFICACAO 40 X 50 MM - EBARA (GS)	1	1	1
	37	1127.04.11115	ROTOR GS150-315 352X42 MAN	1	1	1
	38	---	---	---	---	---
	39	---	---	---	---	---
	40	---	---	---	---	---
	41	---	---	---	---	---

Modelo	Tabela de Carcaça		Qtde
ANSI B-16.1	1127.04.11113	CARCACA GS150-315 ANSI B16.1 (KIT)	1
DIN PN16	1127.04.11114	CARCACA GS150-315 DIN PN16 (KIT)	1

Bocal	Kit Contra Flange		Qtde
SUC - 8"	1127.04.05546	CONTRA FLANGE ANSI DN200 125LB BSP	1
REC - 6"	1127.04.00658	CONTRA FLANGE DN150 125LB PN16 BSP	1
SUC	1127.04.00635	PARAF.SEXT.UNC 3/4 x 3 1/2 RP	8
REC	1127.04.04309	PARAF.SEXT.UNC 3/4 x 3 RP	8
SUC/REC	1127.04.00636	PORCA SEXT.UNC 3/4"	16
SUC	1127.04.07889	JUNTA BORRACHA P/C.FLANGE ANSI DN200 125LB BSP (5546)	1
REC	1127.04.07900	JUNTA BORRACHA P/C.FLANGE DN150 125LB PN16 BSP (0658)	1