

SUCÇÃO: 1" BSP RECALQUE: 1" BSP

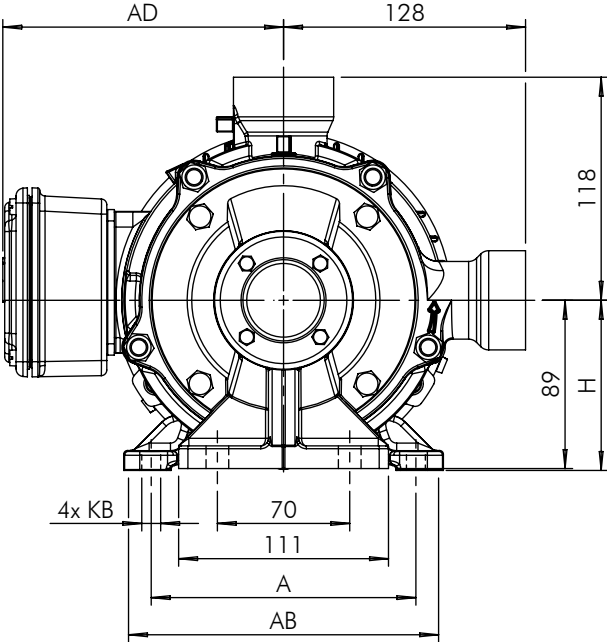
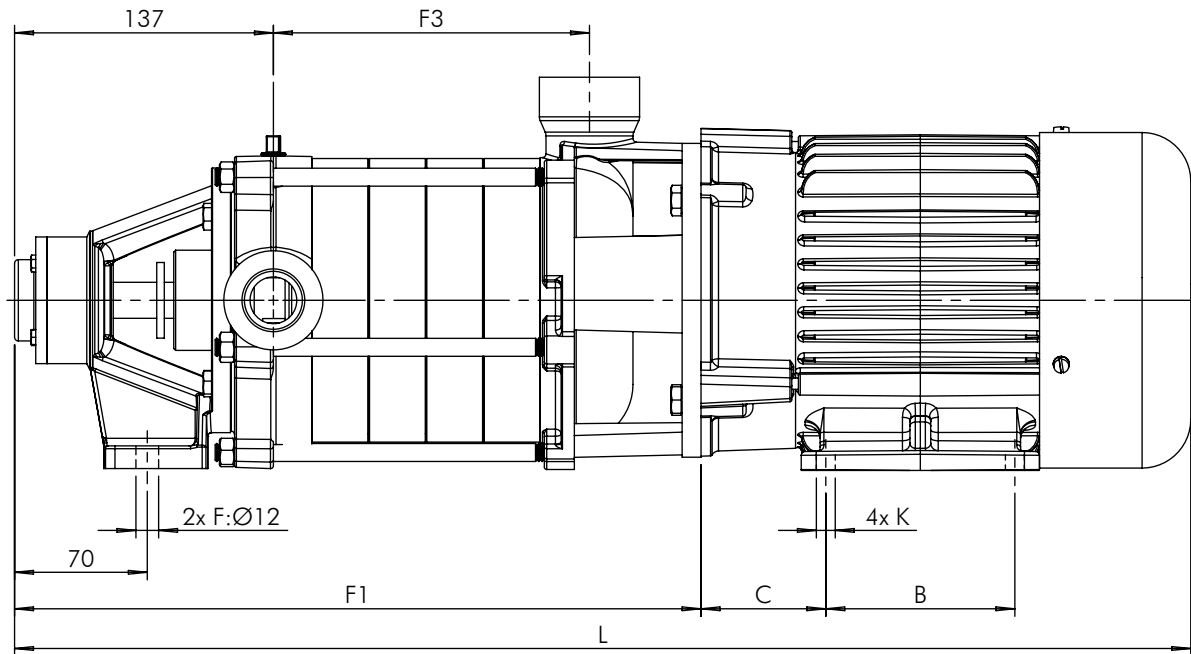


Tabela de Medidas

Modelo	CV	L	A	AB	AD	B	C	F1	F3	H	K	KB
P-11/5 Trif.	3,0	612	140	169	150	100	66	363	168	90	10	10
P-11/5 Monof.		703	160	188	193	140	63			100	12	12
P-11/5 Trif.	4,0	646	140	169	150	100	66	393	198	90	10	10
P-11/6 Trif.	3,0	642								100	12	12
P-11/6 Monof.		733	160	188	193	140	63			100	12	12
P-11/6 Trif.	4,0	676	140	178	150	125	66			90	10	18
P-11/6 Monof.		746	190	228	215	140	70	112	12	22		
P-11/7 Trif.	3,0	672	140	169	150	100	66	423	228	90	10	10
P-11/7 Trif.	4,0	706	190	178		125	66			112	12	18
P-11/7 Monof.		776	190	228	215	140	70			112	12	22
P-11/7 Trif.	5,0	739	160	188	159		63			100		12
P-11/7 Monof.		786	190	228	215	70	112	22				
P-11/8 Trif.	4,0	736	140	178	150	125	66	453	258	90		12
P-11/8 Monof.		806	190	228	215	70	112			22		
P-11/8 Trif.	5,0	793	160	188	159	140	63			100	12	
P-11/8 Monof.		806	190	228	215		70			112	22	
P-11/9 Trif.		823	160	188	159		63	483	288	100	12	
P-11/9 Monof.		836	190	228	215		70			112	22	
P-11/9 Trif.	6,0	809			181				22			

 BOMBAS HIDRÁULICAS EBARA CORPORATION	EXECUTADO	F. Conte	02/03/21	Motor NOVA IP-55					
	VERIFICADO	Gustavo G.	02/03/21						
	APROVADO	Gustavo G.	02/03/21						
	NOME	DATA CRIAÇÃO	OBSERVAÇÃO		REVISÃO	LOCAL	Nº DOCUM.	DATA	APROVADO

Bomba P-11/5-9 IP-55

DESENHO Nº
074116N
ESCALA: 1:4