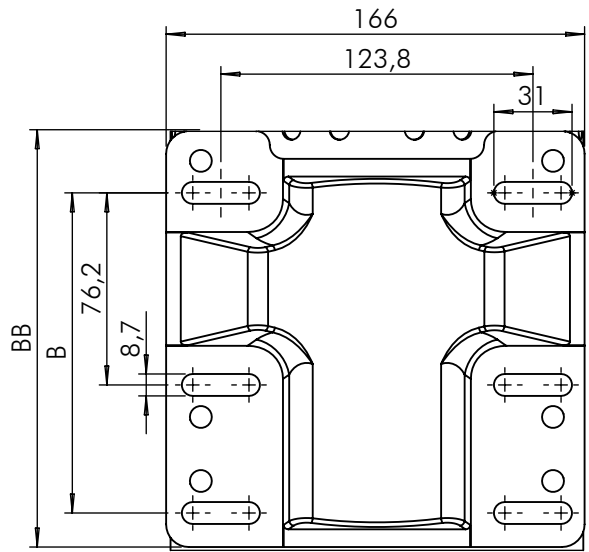
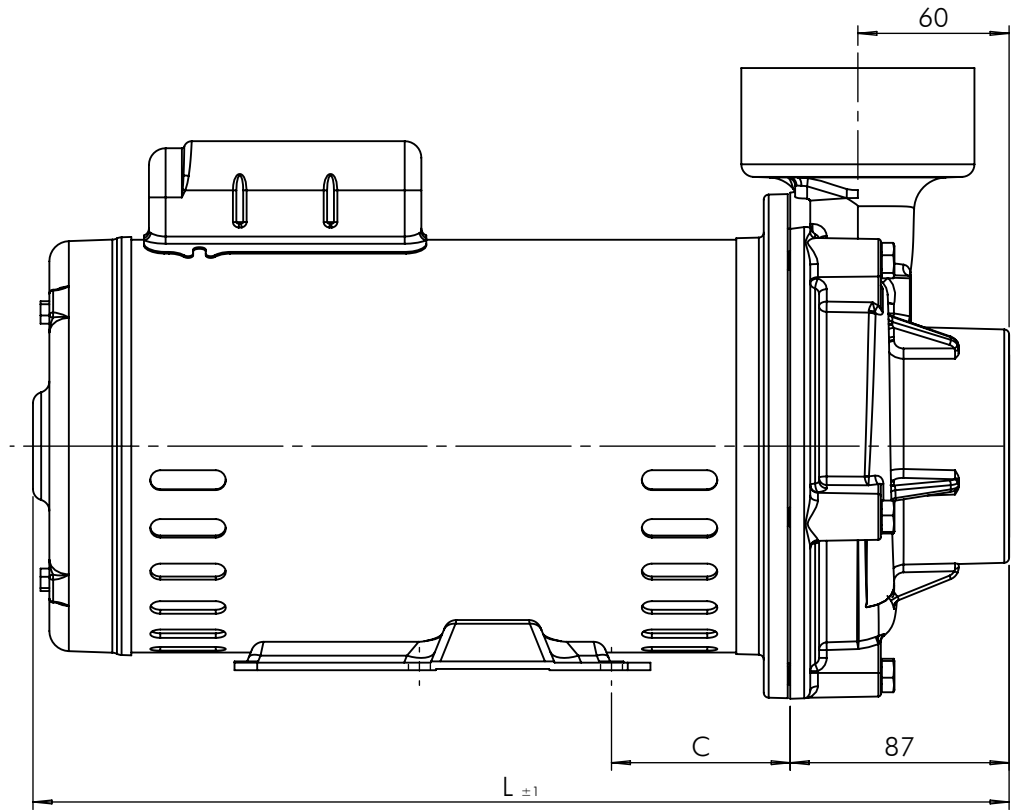
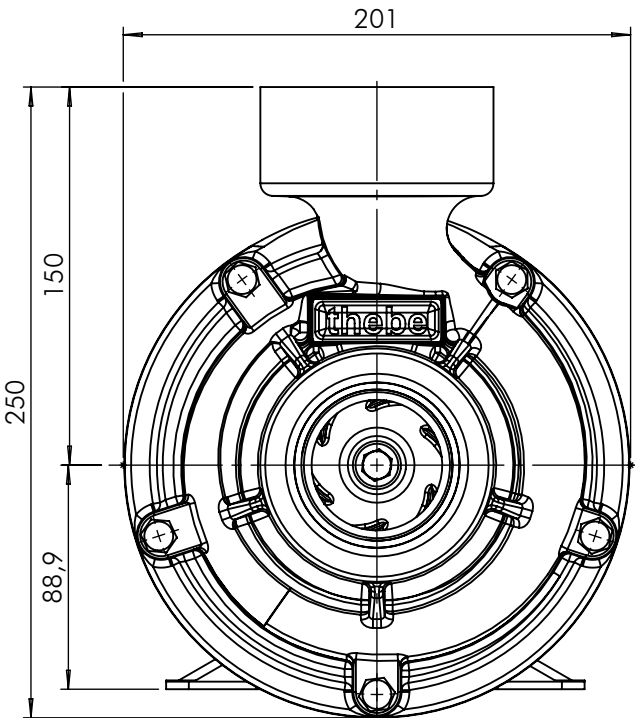



SUCÇÃO: 2.1/2" BSP RECALQUE: 2.1/2" BSP



CV	Motor Trifásico				Motor Monofásico			
	B	BB	C	L	B	BB	C	L
3/4	---	102	80	322	---	102	80	316
1,0			80	342			80	336
1,5			80	362			80	356
2,0	127	165	77	372	127	165	77	386
3,0			77	392			77	396

 BOMBAS HIDRÁULICAS EBARA CORPORATION	EXECUTADO	Wllian C.	03/11/16						
	VERIFICADO	Gustavo G.	03/11/16						
	APROVADO	Garcia	03/11/16						
		NOME	DATA CRIAÇÃO						
				OBSERVAÇÃO	REVISÃO	LOCAL	Nº DOCUM.	DATA	APROVADO
					00	---	---	03/11/16	Garcia

Bomba THI-13 Flange Incorporado

Em caso de dúvidas pergunte!

PESO:

MATERIAL :

DESENHO Nº 402132

ESCALA: 1:3

FOLHA 1 de 1

UNID.: Milímetro (mm)