

SUCÇÃO: 1" BSP

RECALQUE: 1" BSP

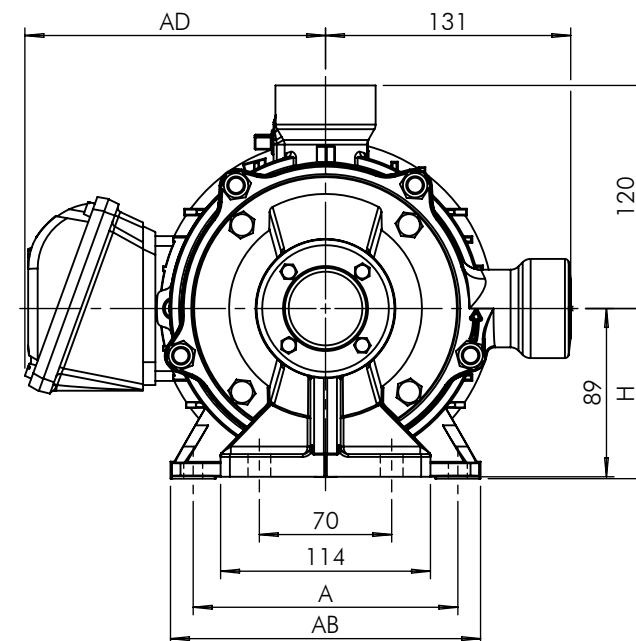
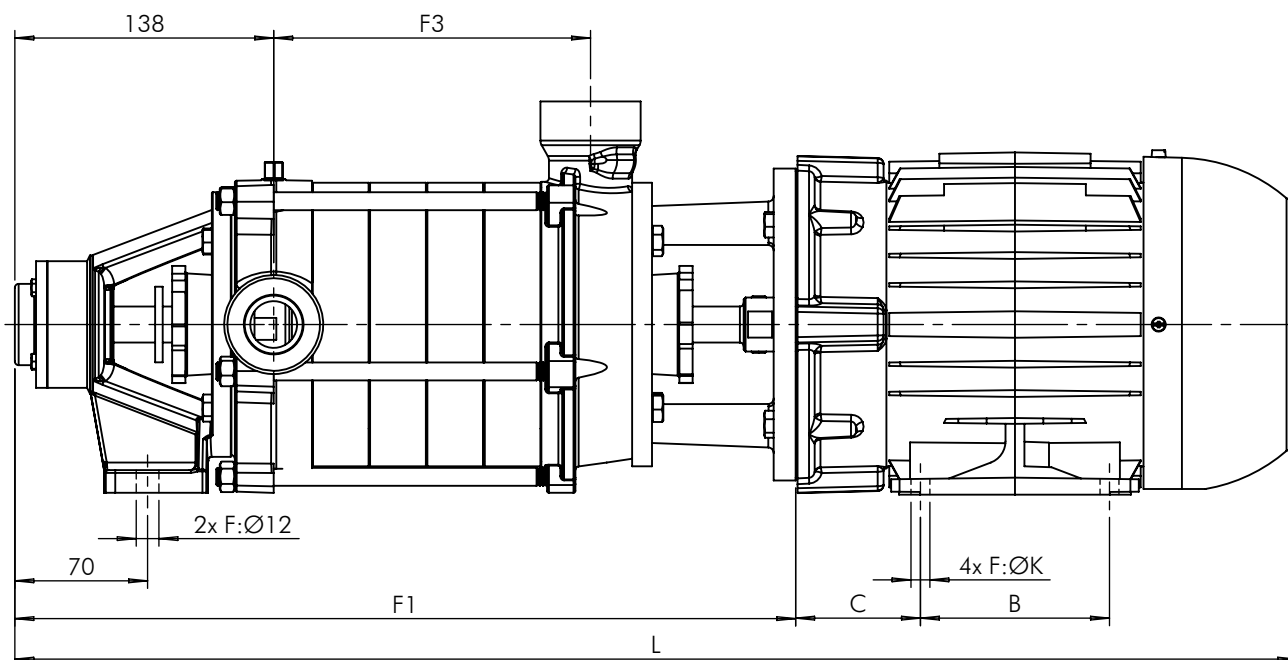


Tabela de Medidas

Modelo	CV	L	F1	F3	A	AB	AD	B	C	H	ØK
P-11/5 Trif.	3,0	710	413	168	140	164	159	100	66	90	10
P-11/5 Monof.		730			160	188	191	140	63	100	12
P-11/6 Trif.		740			140	164	159	100	66	90	10
P-11/6 Monof.	4,0	760	443	198	160	188	191	140	63	100	12
P-11/6 Trif.		763			140	164	159	125	66	90	10
P-11/6 Monof.		805			190	220	206	140	70	112	12
P-11/7 Trif.	3,0	770	473	228	140	164	159	100	66	90	10
P-11/7 Trif.	4,0	793			190	220	206	125	70	112	10
P-11/7 Monof.		835			160	188	169	140	63	100	12
P-11/7 Trif.	5,0	789	503	258	190	220	206	140	70	112	12
P-11/7 Monof.		835			160	188	169	125	66	90	10
P-11/8 Trif.	4,0	823			140	164	159	125	66	90	10
P-11/8 Monof.		865			190	220	206	140	70	112	12
P-11/8 Trif.		819	533	288	160	188	169	140	63	100	12
P-11/8 Monof.	5,0	865			190	220	206	140	70	112	12
P-11/9 Trif.		849			160	188	169	140	63	100	12
P-11/9 Monof.		865	533	288	190	220	206	140	70	112	12
P-11/9 Trif.	6,0	867			190	220	192	140	70	112	12



EXECUTADO	A.P.Scarpel	04/03/10
VERIFICADO	A.P.Scarpel	05/03/10
APROVADO	Garcia	05/03/10
NOME	DATA CRIAÇÃO	OBSERVAÇÃO

01	---	---	03/09/18	Garcia
REVISÃO	LOCAL	Nº DOCUM.	DATA	APROVADO

Bomba P-11/5-9 Gax. IP-55

DESENHO Nº
230116

ESCALA:1:4

Em caso de dúvidas pergunte!

MATERIAL :

PESO:

FOLHA 1 de 1

UNID.: Milímetro (mm)