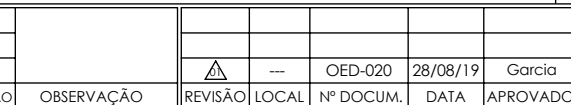


RECALQUE: - . -



Pos.	Descrição	Material	Qtd
21	Protetor	SAE 1020	2
22	Parafuso Sextavado	ZB (SAE)	4
23	Arruela lisa	ZB (SAE)	4
24	Anel O'ring	Borracha nitrílica	1
25	Bujão	Ferro	2
26	Parafuso sextavado	SAE 1020	6
27	Tampa de pressão	GG20	1
28	Anel desgaste Realque	Nodular	1
29	Anel desgaste Sucção	Nodular	1
30	Bujão	Ferro	3
31	Carcaça	GG20	1
32	Parafuso sextavado	SAE 1020	8
33	Rotor	GG20	1



ESCALA: 1:9

UNID.: Milímetro (mm)
-----------------------



EBARA CORPORATION

## Relação de Peças TH 32/125.1 Mancal

Modelo	Pos.	Descrição	GAXETA		SELO T21	
			Qtde	Código	Qtde	Código
SUPORTE TH-30	1	ANEL CADEADO TH-30	1	1127.04.02600	**	**
	2	ANEL O'RING DIAM.25,12 X 1,78MM	1	1127.04.10068	1	1127.04.10068
	3	APERTA GAXETA TH-30	1	1127.04.02590	**	**
	4	ARRUELA LISA 3/8"	1	1127.04.00352	1	1127.04.00352
	5	BUCHA PROTECAO DO EIXO TH-30 MANCAL NODULAR	1	1127.04.02594	**	**
		BUCHA PROTECAO DO EIXO TH-30 MANCAL INOX 304	**	**	1	1127.04.02867
	6	CHAVETA 8x7x40mm (AA)	1	1127.04.08935	1	1127.04.08935
	7	CHAVETA 3/16x3/16x37mm (AB)	1	1127.04.08933	1	1127.04.08933
	8	EIXO TH-30	1	1127.04.02586	1	1127.04.02586
	9	PARAF.SEXT. UNC 1/4" X 5/8" RI	4	1127.04.00297	4	1127.04.00297
	10	PARAF.SEXT. UNC 3/8 x 7/8" RI	1	1127.04.00313	1	1127.04.00313
	11	GAXETA 3/8"	0.60 MT	1127.04.00270	**	**
	12	SELO MEC.1 3/8"T21 BUNA	**	**	1	1127.04.00230
	13	PORCA DO EIXO TH-30	1	1127.04.02596	1	1127.04.02596
	14	PORCA SEXT.UNC 3/8"	2	1127.04.00345	**	**
	15	PRISIONEIRO GAXETA UNC 3/8 x 85mm	2	1127.04.02745	**	**
	16	ANEL CENTRIFUGADOR 30X63X6 TH-30	2	1127.04.12239	2	1127.04.12239
	17	ROLAMENTO 6306 ZZ C3	2	1127.04.10414	2	1127.04.10414
	18	SUPORTE DE APOIO GS/47X110	1	1127.04.12091	1	1127.04.12091
	19	SUPORTE TH-30 (09/19)	1	1127.04.11031	1	1127.04.11031
	20	TAMPA SUPORTE TRASEIRO TH-30	1	1127.04.11032	1	1127.04.11032
	21	PROTETOR TH-30	2	1127.04.12240	2	1127.04.12240
	22	PARAF.SEXT.UNC 3/16 x 1/2" RI ZB	4	1127.04.00811	4	1127.04.00811
	23	ARRUELA LISA No.10 (3/16) ZB (1 KG=5,70%)	4	1127.04.10732	4	1127.04.10732
TAMPA PRES.	24	ANEL O'RING 177,47 x 2,62MM BUNA-N	1	1127.04.10159	1	1127.04.10159
	25	BUJÃO 1/2" BSP	2	1127.04.00775	**	**
	26	PARAF.SEXT. UNC 3/8 x 1 1/4" RI	6	1127.04.00315	6	1127.04.00315
	27	TAMPA DE PRESSÃO TH-32/125	1	1127.04.02578	1	1127.04.03028
CARACA	28	ANEL DESGASTE TH-50/200 REC. TH-40/160 REC.	1	1127.04.02688	1	1127.04.02688
	29	ANEL DESGASTE TH-32/250 SUCCAO	1	1127.04.02643	1	1127.04.02643
	30	BUJÃO 3/8" BSP	3	1127.04.00176	3	1127.04.00176
	31	CARACA TH-32/125.1	1	1127.04.03083	1	1127.04.03083
	33	ROTOR TH-32/125.1 144MM (7/8")	1	1127.04.03125	1	1127.04.03125

Kit Contra Flange	Qtde	Código	Bocal
CONTRA FLANGE ANSI DN50 125LB BSP	1	1127.04.05552	SUC - 2"
CONTRA FLANGE ANSI DN32 125LB BSP	1	1127.04.05540	REC - 1.1/4"
PARAF.SEXT.UNC 5/8 x 2 1/2 RP	4	1127.04.00333	SUC
PORCA SEXT.UNC 5/8"	4	1127.04.00348	SUC
PARAF.SEXT.BSW 1/2 x 2 RI	4	1127.04.00330	REC
PORCA SEXT.BSW 1/2"	4	1127.04.00347	REC
JUNTA BORRACHA P/C.FLANGE ANSI DN50 125LB BSP (5552)	1	1127.04.07894	SUC
JUNTA BORRACHA P/C.FLANGE ANSI DN32 125LB BSP (5540)	1	1127.04.07891	REC