

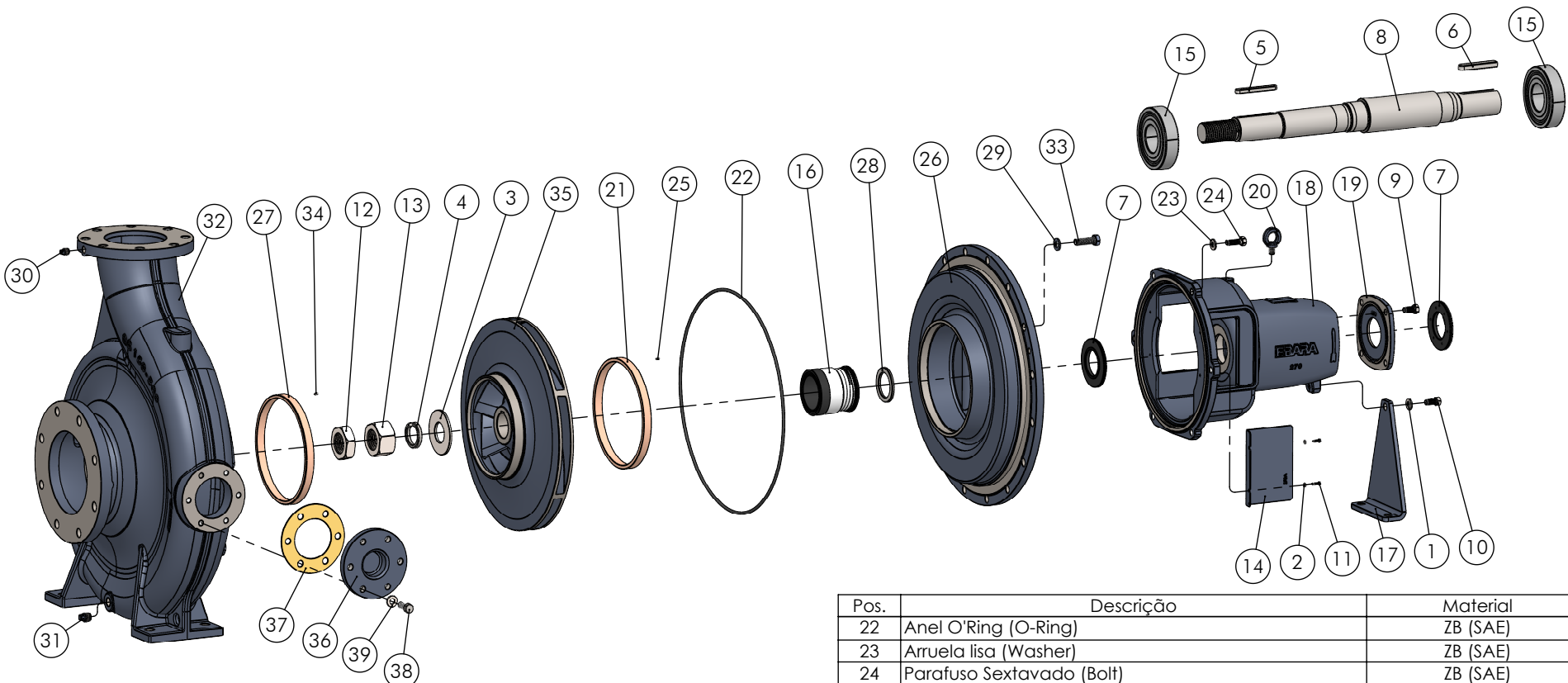
A

B

C


D

- 423 -



Pos.	Descrição	Material	Qtde
1	Arruela lisa (Washer)	ZB (SAE)	1
2	Arruela lisa (Washer)	ZB (SAE)	4
3	Arruela lisa (Washer)	ZB (SAE)	1
4	Arruela de Pressão(Spring Washer)	ZB (SAE)	1
5	Chaveta reta forma AA (key)	Inox-304	1
6	Chaveta reta forma AB (key)	SAE-1045	1
7	Defletor (Deflector)	EPDM / SAE	2
8	Eixo (Shaft)	Inox-420	1
9	Paraf. Sextavado (Bolt)	ZB (SAE)	4
10	Paraf. Sextavado (Bolt)	ZB (SAE)	1
11	Paraf. Sextavado (Bolt)	ZB (SAE)	4
12	Porca Sext.UNC 2" (Fina) Inox 304	Inox-304	1
13	Porca Sext.UNC 2" Inox 304	Inox-304	1
14	Protetor (Protector)	Aço-1020	2
15	Rolamento (Bearing)	---	2
16	Selo Mecânico (Mechanical Seal)	Ceram./Carvão/NBR/304	1
17	Suporte de Apoio (Stay)	Aço-1020	1
18	Suporte (Bearing Casing)	ASTM A48 CL250	1
19	Tampa Suporte (Bearing Cover)	ASTM A48 CL250	1
20	Olhal Susp. (Eye Bolt)	ZB (SAE)	1
21	Anel de Desgaste (Casing Ring)	Bronze C84400	1

Pos.	Descrição	Material	Qtde
22	Anel O'Ring (O-Ring)	ZB (SAE)	1
23	Arruela lisa (Washer)	ZB (SAE)	6
24	Parafuso Sextavado (Bolt)	ZB (SAE)	6
25	Pino Elástico (Spring Pin)	Inox-304	1
26	Tampa de Pressão Selo (Casing Cover)	ASTM A48 CL250	1
27	Anel de Desgaste (Casing Ring)	Bronze C84400	1
28	Anel Distanciador do Rotor (Spacer Ring)	Inox-304	1
29	Arruela Lisa (Washer)	ZB (SAE)	---
30	Bujão 3/8" BSP (Plug)	ZB (SAE)	1
31	Bujão 1/2" BSP (Plug)	ZB (SAE)	1
32	Carcaça (Casing)	ASTM A48 CL250	1
33	Parafuso Sextavado (Bolt)	ZB (SAE)	---
34	Pino Elástico (Spring Pin)	Inox-304	1
35	Rotor (Impeller)	ASTM A48 CL250	1
36	Tampa Carcaça GS200-500 (Handhole Cover)	ASTM A48 CL250	1
37	Junta Velumóid P/Tampa Carcaça (Handhole Gasket)	Volumóid	1
38	Paraf. Sextavado (Bolt)	ZB (SAE)	6
39	Arruela lisa (Washer)	ZB (SAE)	6

	EXECUTADO	F. Conte	08/04/21						
	VERIFICADO	Guilherme Z.	08/04/21						
	APROVADO	Gustavo G.	08/04/21						
		NOME	DATA CRIAÇÃO						

Bomba série GS/260 e GS/270 - Selo

DESENHO Nº
1046GS3

Em caso de dúvidas pergunte!

MATERIAL :

PESO:

FOLHA 1 de 1

UNID.: Milímetro (mm)

ESCALA: 1:15



EBARA CORPORATION

Relação de Peças GS150-500 Mancal Selo



	Pos.	Código	Descrição	Qtde
SUPORTE	1	1127.04.00353	ARRUELA LISA 1/2" ZB	1
	2	1127.04.10732	ARRUELA LISA No.10 (3/16) ZB (1 KG=5,70%) GS	4
	3	---	---	---
	4	---	---	---
	5	1127.04.12545	CHAVETA 18x11x110R (AA) INOX 304	1
	6	1127.04.12546	CHAVETA 18x11x110K (AB)	1
	7	1127.04.12547	DEFLETOR GS/270 Ø65XØ117X9 SAE/EPDM	2
	8	1127.04.12731	EIXO GS/270 INOX 420 (KIT)	1
	9	1127.04.10253	PARAF.SEXT.UNC 1/2 x 1" RI ZB	4
	10	1127.04.10253	PARAF.SEXT.UNC 1/2 x 1" RI ZB	1
	11	1127.04.10706	PARAF.SEXT.UNC 3/16 x 5/8" RI ZB (GS)	4
	12	1127.04.12538	PORCA SEXT.UNC 2" (FINA) INOX 304	1
	13	1127.04.12539	PORCA SEXT.UNC 2" INOX	1
	14	1127.04.12540	PROTETOR GS/270A (184X112,5) ACO 1020	2
	15	1127.04.12541	ROLAMENTO 6314 ZZ	2
	16	1127.04.12542	SELO MEC. 65mm CER/CARBONO/NBR/INOX 304 (GS)	1
	17	1127.04.12536	SUPORTE DE APOIO GS/260X140	1
	18	1127.04.12672	SUPORTE GS/270	1
	19	1127.04.12673	TAMPA SUPORTE GS/270	1
	20	1127.04.12495	OLHAL SUSP. FORJADO TIPO PARAFUSO 1/2 UNC	1
TAMPA PRES.	21	1127.04.12678	ANEL DESG.BRONZE.GS/FSLY-250	1
	22	1127.04.10705	ANEL O'RING 532,26 X 5,33MM EPDM (GS)	1
	23	1127.04.00353	ARRUELA LISA 1/2" ZB (1 KG=138 PCS)	6
	24	1127.04.04256	PARAF.SEXT.UNC 1/2 x 1 1/2 RI ZB	6
	25	1127.04.10704	PINO ELASTICO 3 X 8 INOX 304 (GS)	2
	26	1127.04.12728	TAMPA PRES.GS150-500 SELO (KIT)	1
CARCAÇA	27	1127.04.12678	ANEL DESG.BRONZE.GS/FSLY-250	1
	28	1127.04.12732	ANEL DISTANCIADOR DO ROTOR GS/270 MANCAL INOX 304	1
	29	1127.04.00354	ARRUELA LISA 5/8" ZB (1 KG=1,15 %)	16
	30	1127.04.10790	BUJAO 1/2" BSP GALV. SAE (ZB)	1
	31	1127.04.10791	BUJAO 3/8" BSP GALV. SAE (ZB)	1
	32	Tab.Carcaça	CARCACA GS150-500 (KIT)	1
	33	1127.04.00334	PARAF.SEXT.UNC 5/8 x 2 RI ZB	16
	34	1127.04.10704	PINO ELASTICO 3 X 8 INOX 304 (GS)	2
	XX	1127.04.12338	PLAQUETA DE IDENTIFICACAO 40 X 50 MM - EBARA (GS)	1
	35	1127.04.12711	ROTOR GS150-500 511X60 MAN	1
	36	1127.04.10688	TAMPA CARCACA GS200-500	1
	37	1127.04.10692	JUNTA VELUMOID P/TAMPA CARCACA (10688)	1
	38	1127.04.04256	PARAF.SEXT.UNC 1/2 x 1 1/2 RI ZB	6
	39	1127.04.00353	ARRUELA LISA 1/2" ZB (1 KG=138 PCS)	6

Modelo	Tabela de Carcaça		Qtde
ANSI B-16.1	1127.04.12694	CARCACA GS150-500 ANSI B16.1 (KIT)	1
DIN PN16	NOVO	CARCACA GS150-500 DIN PN16 (KIT)	1

Bocal	Kit Contra Flange		Qtde
SUC - 8"	1127.04.05546	CONTRA FLANGE ANSI DN200 125LB BSP	1
REC - 6"	1127.04.00658	CONTRA FLANGE DN150 125LB PN16 BSP	1
SUC	1127.04.00635	PARAF.SEXT.UNC 3/4 x 3 1/2 RP	8
REC	1127.04.04309	PARAF.SEXT.UNC 3/4 x 3 RP	8
SUC/REC	1127.04.00636	PORCA SEXT.UNC 3/4"	16
SUC	1127.04.07889	JUNTA BORRACHA P/C.FLANGE ANSI DN200 125LB BSP (5546)	1
REC	1127.04.07900	JUNTA BORRACHA P/C.FLANGE DN150 125LB PN16 BSP (0658)	1