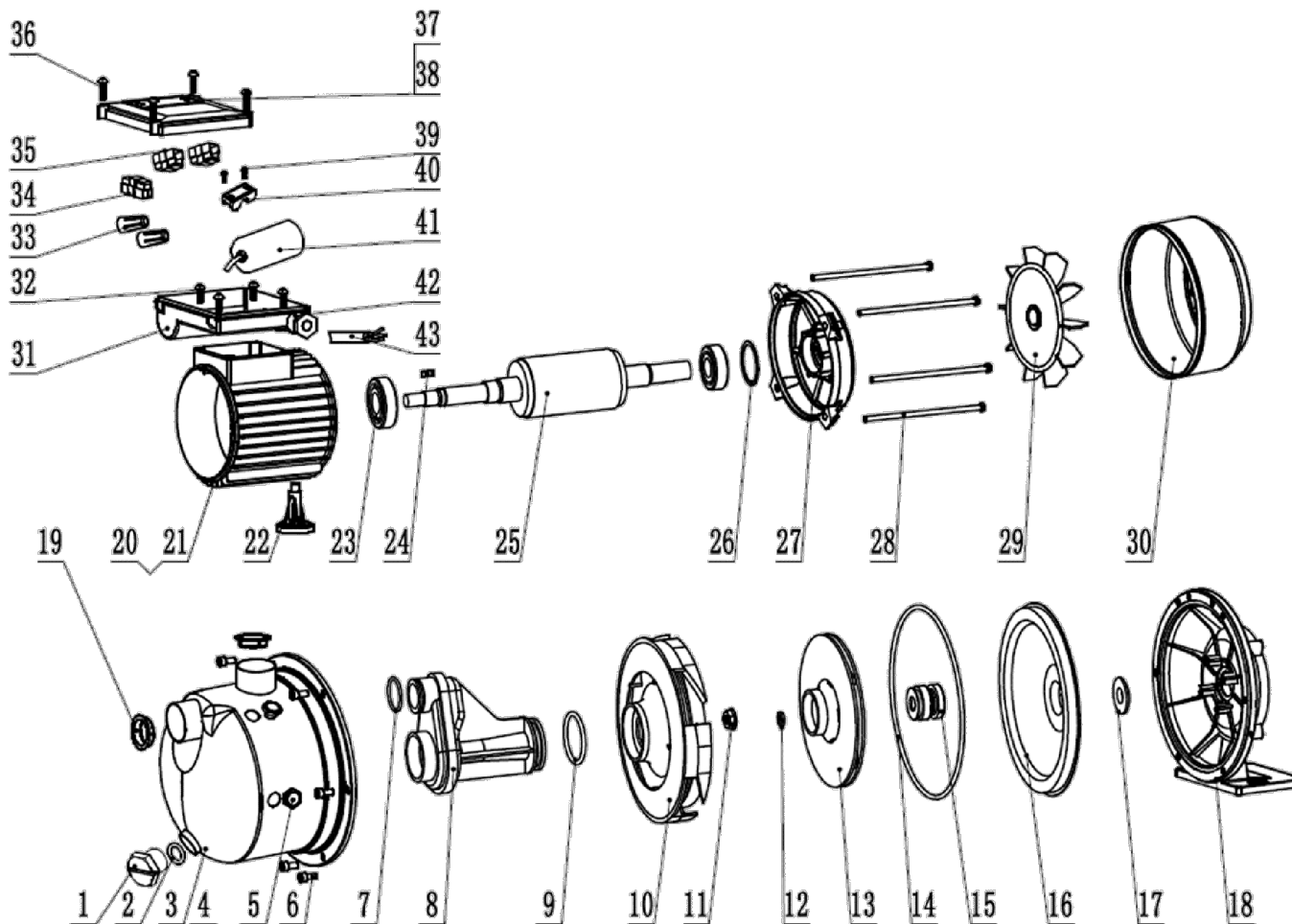



SUCÇÃO: 1" BSP

RECALQUE: 1" BSP



Pos.	descrição	Unid.	Qtde	Código
1	Bujão de Escorva+O-Ring TJET-100 (3.6.01.1.225+3.1.2.1.0483)	Pç	1	1127.04.11252
2		Pç	1	
3	Carcaça TJET-100 (3.2.4.08.10)	Pç	1	1127.04.11282
4	Bujão de Escorva+O-Ring TJET-100/TJET-F10/TJET-F20 (3.6.01.1.214+3.1.2.1.152)	Pç	2	1127.04.13419
5		Pç	2	
6	Parafuso TJET-100 (3.6.01.4.209)	Pç	6	1127.04.13435
7	Anel O'Ring TJET-100/TJET-F10 (3.1.2.1.101)	Pç	1	1127.04.11305
8	Valvula Interna TJET-100 (3.1.1.07.0151)	Pç	1	1127.04.11371
9	Anel O'Ring TJET-60/TJET-100/TJET-F10 (3.1.2.1.111)	Pç	1	1127.04.11306
10	Difusor TJET-100 (3.1.1.14.1000)	Pç	1	1127.04.11292
11	Porca TJET-100 (3.6.02.020)	Pç	1	1127.04.13453
12	Anel Elastica TJET-100 (3.6.03.1.156)	Pç	1	1127.04.13413
13	Rotor TJET-100 (3.1.1.06.0104)	Pç	1	1127.04.11347
14	Anel O'Ring TJET-100/TJET-F10 (3.1.2.1.114)	Pç	1	1127.04.11307
15	Selo Mec. TJET-100 (3.6.08.029)	Pç	1	1127.04.13471
16	Tampa Traseira TJET-100 (3.2.4.09.01)	Pç	1	1127.04.11369
17	Retentor TP-80/TJET-100/TJET-F10 (3.1.1.18.215)	Pç	1	1127.04.11327
18	Acoplamento/Tampa Intern. TJET-100 (3.2.2.05.58)	Pç	1	1127.04.11232
19	Tampao Protetor TJET-60/TJET-100 (2.1.05.5.18)	Pç	2	1127.04.13478
20	Carcaça do Motor+Estator TJET-100(2.1.04.2.9942+2.1.06.1402)	Pç	1	1127.04.11277
21		Pç	1	
22	Pe TJET-100/TJET-F20 (3.1.1.16.007)	Pç	1	1127.04.11319
23	Rolamento TJET-100 (3.6.06.1.004)	Pç	2	1127.04.13463
24	Chaveta do Eixo TJET-60/TJET-100 (3.6.03.2.002)	Pç	1	1127.04.13429
25	Rotor do Motor TJET-100 (2.1.02.82413)	Pç	1	1127.04.11342
26	Arruela Ondulada TJET-100/TJET-F10 (3.6.03.1.146)	Pç	1	1127.04.11248
27	Tampa Traseira do Motor TJET-100 (2.1.04.2.9915)	Pç	1	1127.04.11365
28	Parafuso TJET-100 (3.6.01.2.170)	Pç	4	1127.04.13434
29	Ventoinha TJET-100/TJET-F10 (2.3.5.1.032)	Pç	1	1127.04.11374
30	Tampa defletora TJET-100 (3.2.1.028.118)	Pç	1	1127.04.11356
31	Caixa do Capacitor TJET-60/TJET-100 (3.1.1.12.104)	Pç	1	1127.04.11257
32	Parafuso TJET-100 (3.6.01.2.103)	Pç	4	1127.04.13433
33	Protetor do Cabo TJET-60/TJET-100/TJET-F10 (3.6.10.200)	Pç	2	1127.04.13457
34	Plugue Volt. B-10/TJET-60/TJET-100/TJET-F10/TJET-F20 (3.6.10.170+3.6.10.171)	Pç	2	1127.04.11320
35		Pç	1	
36	Parafuso TJET-60/TJET-100 (3.6.01.2.108)	Pç	4	1127.04.13439
37	Plaqueta TJET-100 (3.4.03.2.283)	Pç	1	1127.04.13449
38	Rebite TJET-60/TJET-100 (3.6.01.1.1020)	Pç	2	1127.04.13459
39	Parafuso TJET-60/TJET-100 (3.6.01.2.500)	Pç	2	1127.04.13440
40	Protetor do Cabo TJET-60/TJET-100 (2.3.5.0.15)	Pç	1	1127.04.11325
41	Capacitor (40uf/250V, 2Cables) TP-80/TJET-100/TJET-F10 (3.3.2.0122)	Pç	1	1127.04.11264
42	Bracadeira de Fixacao TJET-60/TJET-100 (3.1.1.18.115)	Pç	1	1127.04.13418
43	Cabo B-10/TJET-60/TJET-100 (3.3.1.3.215)	Pç	1	1127.04.11255

 BOMBAS HIDRÁULICAS EBARA CORPORATION	EXECUTADO	F. Conte	29/03/22						
	VERIFICADO	Gustavo G.	29/03/22						
	APROVADO	Gustavo G.	29/03/22						
	NOME	DATA CRIAÇÃO	OBSERVAÇÃO	REVISÃO	LOCAL	Nº DOCUM.	DATA	APROVADO	

Bomba TJET-100 1,0cv Monof.IP44

DESENHO Nº
0561007



ESCALA:1:1

Em caso de dúvidas pergunte!

MATERIAL :

PESO:

FOLHA 1 de 1

UNID.: Milímetro (mm)