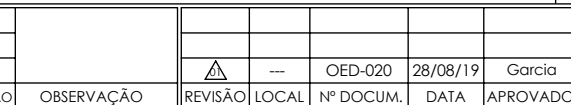


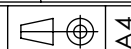
RECALQUE: - . -



Pos.	Descrição	Material	Qtde
21	Protetor	SAE 1020	2
22	Parafuso Sextavado	ZB (SAE)	4
23	Arruela lisa	ZB (SAE)	4
24	Anel O'ring	Borracha nitrílica	1
25	Bujão	Ferro	2
26	Parafuso sextavado	SAE 1020	6
27	Tampa de pressão	GG20	1
28	Anel desgaste Realque	Nodular	1
29	Anel desgaste Sucção	Nodular	1
30	Bujão	Ferro	3
31	Carcaça	GG20	1
32	Parafuso sextavado	SAE 1020	8
33	Rotor	GG20	1



DESENHO Nº	228000
------------	--------



ESCALA:1:9

UNID.: Milímetro (mm)



EBARA CORPORATION

Relação de Peças TH 40/250 Mancal

Modelo	Pos.	Descrição	GAXETA		SELO T21	
			Qtde	Código	Qtde	Código
SUPORTE TH-40	1	ANEL CADEADO TH-40/TH-40R	1	1127.04.02550	**	**
	2	ANEL O'RING DIAM.34,65x1,78MM	1	1127.04.10069	1	1127.04.10069
	3	APERTA GAXETA TH-40/TH-40R	1	1127.04.02549	**	**
	4	ARRUELA LISA 3/8"	1	1127.04.00352	1	1127.04.00352
	5	BUCHA PROTECAO DO EIXO TH-40 MANCAL SELO/GAX NODULAR	1	1127.04.03186	**	**
		BUCHA PROTECAO DO EIXO TH-40 MANCAL SELO/GAX INOX 304	**	**	1	1127.04.02900
	6	CHAVETA 10x8x70MM (AA)	1	1127.04.02505	1	1127.04.02505
	7	CHAVETA 8x7x50MM (AB)	1	1127.04.02506	1	1127.04.02506
	8	EIXO TH-40	1	1127.04.02545	1	1127.04.02545
	9	PARAF.SEXT. UNC 1/4" X 5/8" RI	4	1127.04.00297	4	1127.04.00297
	10	PARAF.SEXT. UNC 3/8 x 7/8" RI	1	1127.04.00313	1	1127.04.00313
	11	GAXETA 3/8"	0.75 MT	1127.04.00270	**	**
	12	SELO MEC.1 3/4" T21 BUNA	**	**	1	1127.04.00229
	13	PORCA DO EIXO TH-40	1	1127.04.02518	1	1127.04.02518
	14	PORCA SEXT.UNC 3/8"	2	1127.04.00345	**	**
	15	PRISIONEIRO GAXETA UNC 3/8 x 95MM	2	1127.04.00183	**	**
	16	ANEL CENTRIFUGADOR 40X76X6 - TH-40	2	1127.04.11207	2	1127.04.11207
	17	ROLAMENTO 6308 ZZ C3	2	1127.04.10417	2	1127.04.10417
	18	SUPORTE DE APOIO GS/105X110	1	1127.04.12386	1	1127.04.12386
	19	SUPORTE TH-40 (08/20)	1	1127.04.11210	1	1127.04.11210
	20	TAMPA SUPORTE GS/240	1	1127.04.10932	1	1127.04.10932
	21	PROTETOR TH-40	2	1127.04.11208	2	1127.04.11208
	22	PARAF.SEXT.UNC 3/16 x 1/2 RI	4	1127.04.00811	4	1127.04.00811
	23	ARRUELA LISA No.10 (3/16) ZB	4	1127.04.10732	4	1127.04.10732
TAMPA PRES.	24	ANEL O'RING 269 x 2,62MM BUNA-N	1	1127.04.10161	1	1127.04.10161
	25	BUJÃO 1/2" BSP	2	1127.04.00775	**	**
	26	PARAF.SEXT.UNC 3/8" X 1.1/4" RI	6	1127.04.00315	6	1127.04.00315
CARCAÇA	27	TAMPA DE PRESSÃO TH-32/250	1	1127.04.02575	1	1127.04.03076
	28	ANEL DESGASTE TH-32/250 TH-40/250 RECALQ.	1	1127.04.03041	1	1127.04.03041
	29	ANEL DE DESGASTE TH-40/250 SUCÇÃO	1	1127.04.02641	1	1127.04.02641
	30	BUJÃO 3/8" BSP	3	1127.04.00176	3	1127.04.00176
	31	CARCAÇA TH-40/250 250LB	1	1127.04.03062	1	1127.04.03062
	32	PARAF.SEXT.UNC 3/8" X 1.1/2" RI	10	1127.04.00316	10	1127.04.00316
	33	ROTOR TH-40/250 260MM	1	1127.04.02616	1	1127.04.02616

Kit Contra Flange	Qtde	Código	Bocal
CONTRA FLANGE ANSI DN65 250LB BSP	1	1127.04.05545	SUC - 2.1/2"
CONTRA FLANGE ANSI DN 40 250LB BSP	1	1127.04.05518	REC - 1.1/2"
PARAF.SEXT.UNC 3/4 x 3 RP	8	1127.04.04309	SUC
PARAF.SEXT.UNC 3/4 x 2.1/2 RI	4	1127.04.05002	REC
PORCA SEXT.UNC 3/4"	12	1127.04.00636	SUC/REC
JUNTA BORRACHA P/C.FLANGE ANSI DN65 250LB BSP (5545)	1	1127.04.07895	SUC
JUNTA BORRACHA P/C.FLANGE ANSI DN 40 250LB BSP (5518)	1	1127.04.07885	REC