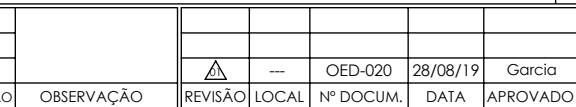


RECALQUE: - . -



C

DC

	A4
ESCALA:1:9	

UNID.: Milímetro (mm)



EBARA CORPORATION

Relação de Peças TH 25/150 Mancal

Modelo	Pos.	Descrição	GAXETA		SELO T21	
			Qtde	Código	Qtde	Código
SUPORTE TH-30	1	ANEL CADEADO TH-30	1	1127.04.02600	**	**
	2	ANEL O'RING DIAM.25,12 X 1,78MM	1	1127.04.10068	1	1127.04.10068
	3	APERTA GAXETA TH-30	1	1127.04.02590	**	**
	4	ARRUELA LISA 3/8"	1	1127.04.00352	1	1127.04.00352
	5	BUCHA PROTECAO DO EIXO TH-30 MANCAL NODULAR	1	1127.04.02594	**	**
	5	BUCHA PROTECAO DO EIXO TH-30 MANCAL INOX 304	**	**	1	1127.04.02867
	6	CHAVETA 8x7x40mm (AA)	1	1127.04.08935	1	1127.04.08935
	7	CHAVETA 3/16x3/16x37mm (AB)	1	1127.04.08933	1	1127.04.08933
	8	EIXO TH-30 (P/BOMBA TH-25/150 - TH-25/200)	1	1127.04.03403	1	1127.04.03403
	9	PARAF.SEXT. UNC 1/4" X 5/8" RI	4	1127.04.00297	4	1127.04.00297
	10	PARAF.SEXT. UNC 3/8 x 7/8" RI	1	1127.04.00313	1	1127.04.00313
	11	GAXETA 3/8"	0.60 MT	1127.04.00270	**	**
	12	SELO MEC.1 3/8"T21 BUNA	**	**	1	1127.04.00230
	---	ARRUELA LISA R-16/18/20/RL-14/16	1	1127.04.01302	1	1127.04.01302
	---	PARAF. ALLEN 3/8 X 1.1/2	1	1137.01.01561	1	1137.01.01561
	14	PORCA SEXT.UNC 3/8"	2	1127.04.00345	**	**
	15	PRISIONEIRO GAXETA UNC 3/8 x 85mm	2	1127.04.02745	**	**
	16	ANEL CENTRIFUGADOR 30X63X6 TH-30	2	1127.04.12239	2	1127.04.12239
	17	ROLAMENTO 6306 ZZ C3	2	1127.04.10414	2	1127.04.10414
	18	SUPORTE DE APOIO GS/47X110	1	1127.04.12091	1	1127.04.12091
	19	SUPORTE TH-30 (09/19)	1	1127.04.11031	1	1127.04.11031
	20	TAMPA SUPORTE TRASEIRO TH-30	1	1127.04.11032	1	1127.04.11032
	21	PROTETOR TH-30	2	1127.04.12240	2	1127.04.12240
	22	PARAF.SEXT.UNC 3/16 x 1/2" RI ZB	4	1127.04.00811	4	1127.04.00811
	23	ARRUELA LISA No.10 (3/16) ZB (1 KG=5,70%)	4	1127.04.10732	4	1127.04.10732
TAMPA PRES.	24	ANEL O'RING 145,72 x 2,62MM BUNA-N	1	1127.04.10158	1	1127.04.10158
	26	PARAF.SEXT. UNC 3/8 x 1 1/4" RI	6	1127.04.00315	6	1127.04.00315
	27	TAMPA DE PRESSÃO TH-25/150	1	1127.04.02611	1	1127.04.03162
CARCACA	30	BUJÃO 1/4" BSP	2	1127.04.00174	2	1127.04.00174
	31	CARCAÇA TH-25/150	1	1127.04.03042	1	1127.04.03042
	32	PARAF.SEXT.UNC 3/8 x 1 RI	4	1127.04.00314	4	1127.04.00314
	33	ROTOR TH-25/150 147MM (7/8")	1	1127.04.03037	**	**
		ROTOR TH-25/150 MANCAL SELO	**	**	1	1127.04.03164

Kit Contra Flange	Qtde	Código	Bocal
CONTRA FLANGE ANSI DN32 125LB BSP	1	1127.04.05540	SUC - 1.1/4"
CONTRA FLANGE ANSI DN25 125LB BSP	1	1127.04.05534	REC - 1"
PARAF.SEXT.BSW 1/2 x 2 RI	8	1127.04.00330	SUC/REC
PORCA SEXT.BSW 1/2"	8	1127.04.00347	SUC/REC
JUNTA BORRACHA P/C.FLANGE ANSI DN32 125LB BSP (5540)	1	1127.04.07891	SUC
JUNTA BORRACHA P/C.FLANGE ANSI DN25 125LB BSP (5534)	1	1127.04.07890	REC